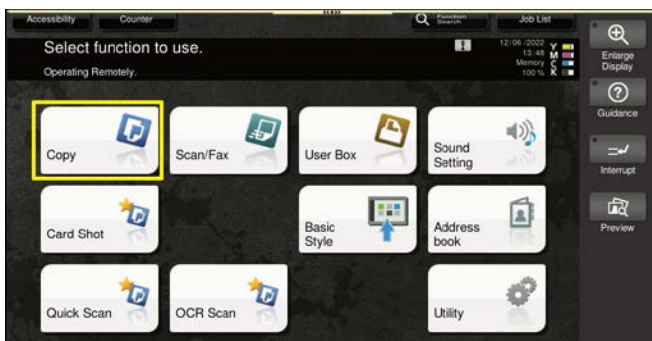


Changing paper type on Bizhub Copier

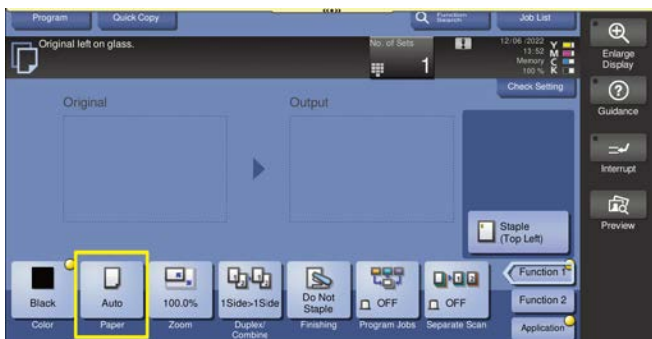
If the paper type on the copier has been changed, for example to thick, and a job is sent to the printer using plain paper, a message may appear asking to select the correct tray. This is because of the mismatch in the paper types.

To change the paper type **back** to plain paper:

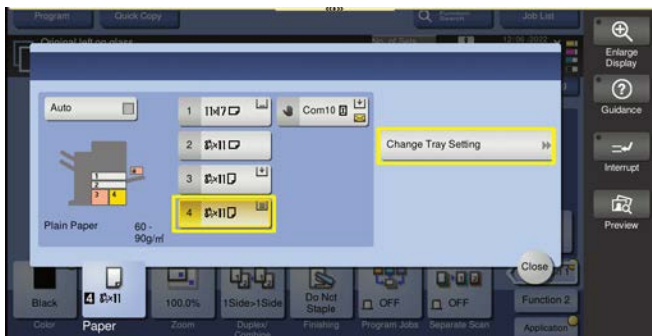
1. Enter the **COPY** screen on the copier (**[MENU]**=>**[COPY]**)



2. Touch **[PAPER]**



3. Select the tray with the paper requiring changing
4. Touch **[Change Tray Setting]**



Bridgeport Office Solutions

43 Speers Road

Winnipeg, Manitoba R2J 1M2

(204) 953-0540 (P) | (204) 953-0549 (F) | bpadmin@bpos.ca (E) | www.bpos.ca

5. Select **[Plain Paper]**
6. Select **[Auto Detect]**
7. Touch **[CLOSE]**



8. Re-send the print job

If the error persists, check the paper settings in the print driver prior to sending.